



# MacBook Pro 13" Retina Display Late 2012 iSight Camera Cable Replacement

Prereq for display assembly.

Written By: Walter Galan



---

# INTRODUCTION

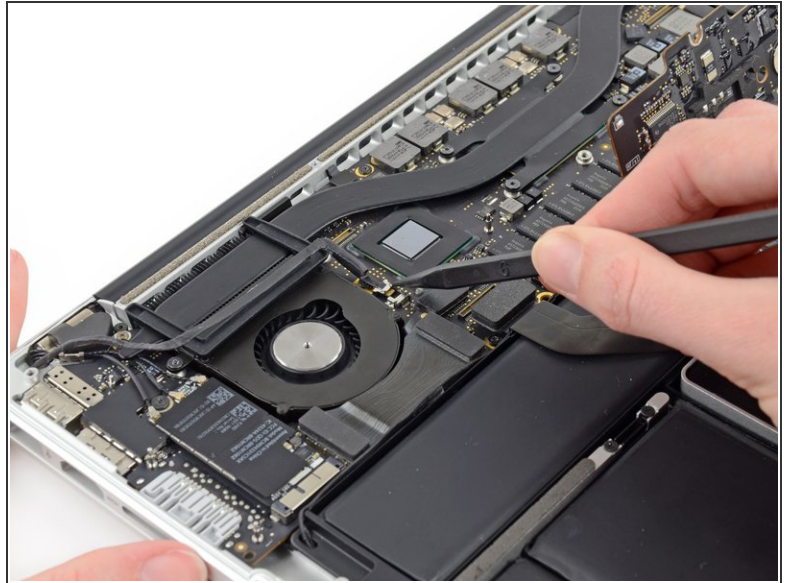
Prereq for display assembly.

---

## TOOLS:

- [Spudger](#) (1)
-

## Step 1 — iSight Camera Cable



- Use the tip of a spudger to push the iSight camera cable connector straight away from its socket on the logic board.
- i** It is recommended to carefully push on both sides of the connector to "walk" it out of its socket.

## Step 2



- Move the iSight camera cable aside.

To reassemble your device, follow these instructions in reverse order.